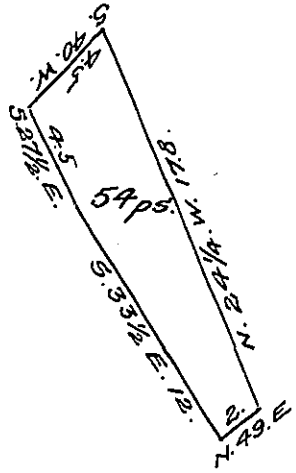


York County shore.



Lancaster County shore.

A Draught of Little Brushey Island situate in the river Susquehanna in Manor township Lancaster County about half a perch above Gutter Island three perches to the Westward of Mussers large Island about half a mile above Frys falls opposite the lands late Philip Sowers decd on the Lancaster shore & opposite the land of Jacob Musser on the York shore Containing fifty four perches Strict measure Surveyed in pursuance of a Warrant dated 13<sup>th</sup> of August A.D. 1814 granted to Peter Kline & George Kline.

Jacob Hibshman D.S.

To Jacob Spangler Esq<sup>r</sup> }  
 Surveyor General. }

IN TESTIMONY that the above is a copy of the original remaining on file in the Department of Internal Affairs of Pennsylvania, made conformably to an Act of Assembly approved the 16th day of February 1833, I have hereunto set my hand and caused the Seal of said Department to be affixed at Harrisburg, this twenty first day of January 1908.

*Henry Howell*  
 Secretary of Internal Affairs.